

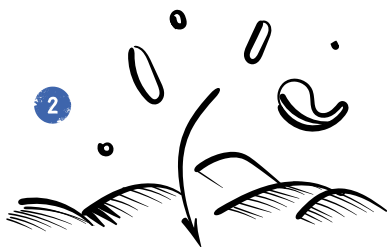
[EN]

Flower meadow

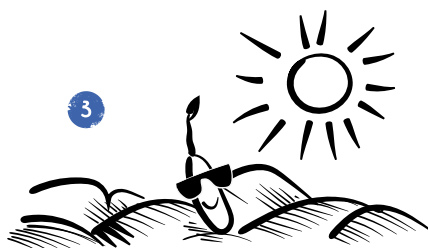
Instructions



Before sowing, the soil must be prepared to form a fine-crumb seedbed that is free of any vegetation. The best way to do this is to remove the turf and loosen the soil with a rake.



The flower meadow is best sown before the onset of wet weather (spring or autumn). Sow 2-4 grams of seed per square meter and press down with a roller (or shoes) to establish contact with the soil.



Most wild herbs are light germinators, so they must not be raked in or covered with soil!



If there is no rain after germination, the area must be watered gently every 2-3 days to protect the seedlings from drying out (maximum 3 weeks). After that, the flower meadow should no longer be watered.

